

New Product from CONCRIB.

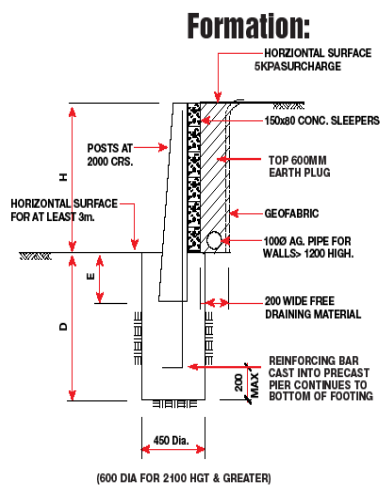


Concrib has for several years been producing a concrete sleeper retaining wall system that looks good, lasts a lifetime, never rots and is termite free.

Recently Concrib introduced a **flat-face concrete sleeper beam** to compliment the original radiused-face beams. The new profile presents a clean, contemporary feel to

the traditional sleeper wall system. Concrib concrete sleeper wall systems are compliant with AS3600 Concrete Structures and AS 4678 Earth Retaining Structures. With a natural concrete finish, the walls are easily coated with most popular concrete sealants.

Concrib offer an obligation free design-advice-budget planning service. Maximise your land value with a Concrib Retaining Wall. Visit us at www.concrib.com.au



LOADING/DESIGN PARAMETERS

- Soil: 2.0 t/m³ Density 30° Internal angle of friction Bearing capacity 150 kPa
- Loading - 5 kPa surcharge
- For walls over 1950mm height further advice should be sought. Single extra beams are required at base of wall.





*LOOKS GOOD, LASTS A LIFETIME,
NEVER ROTS, TERMITE FREE !!!*

